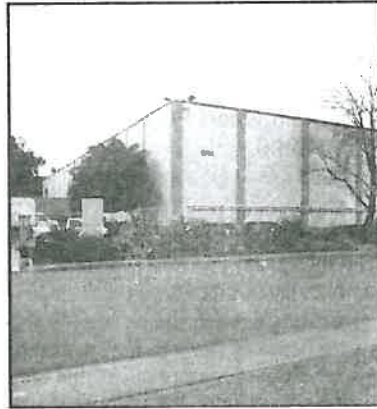


# SAN DIEGO DAILY TRANSCRIPT

June 1, 2010

---

## Inside



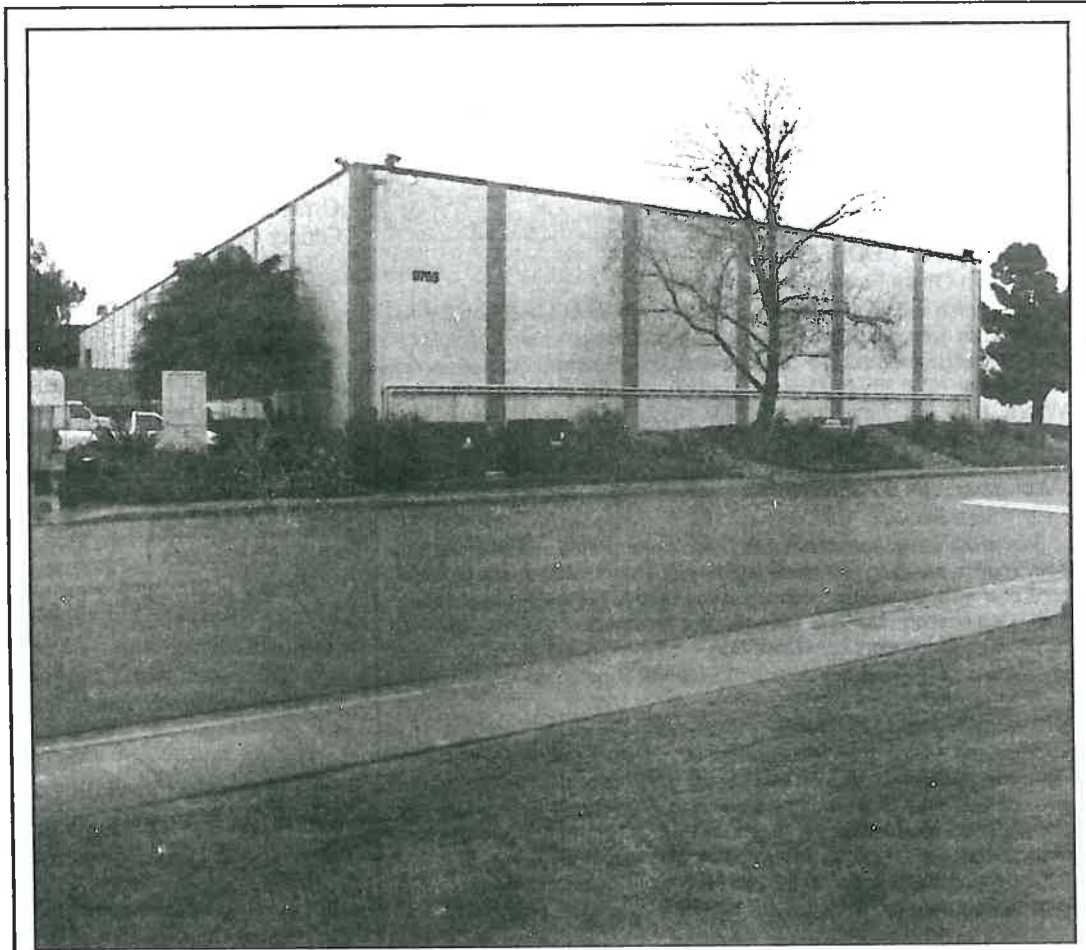
### **REAL ESTATE**

- Priority Moving Inc. has signed a 60-month, \$710,000 lease for 23,940 square feet of industrial space at 9755 Distribution Ave., San Diego.

**Page 5**

# SAN DIEGO DAILY TRANSCRIPT

June 1, 2010



## Priority lease brings Westcore center to 100%

**MIRAMAR** — *Priority Moving Inc.* has signed a 60-month, \$710,000 lease for 23,940 square feet of industrial space in Westcore Distribution Center at 9755 Distribution Ave., San Diego 92121.

The lease brings the 47,666-square-foot industrial building to 100 percent leased. Brad Tecca, of *Cassidy Turley BRE Commercial*, represented the lessor, *Westcore Properties*. Bryce Aberg, Brant Aberg and Glenn Arnold, also of *Cassidy Turley BRE*, represented the lessee.

Priority will move from its current 13,000-square-foot location at 9586 Distribution in July 2010.

In other activity, *Shaw Mortgage* leased 23,940 square feet for 36 months at \$470,615 in fall 2008, and in that summer *Rapid Response Emergency Flood Services Inc.* leased 9,550 square feet for 68 months at \$415,223.

In late 2007, *Decor Furniture* leased 14,050 square feet for three years at \$323,712. The building was constructed in 1974 on a 2.12-acre lot and acquired by Westcore in January 2005. The property is part of San Diego-based Westcore's 8.7 million-square-foot commercial real estate portfolio of industrial and office space.